

Leela Palaces, Hotels and Resorts

The Leela Palace Bengaluru



The Building

A 357 keys Luxury hotel at the heart of Bengaluru. The hotels architecture is inspired by the Mysore palace.

- ✓ The hotel was designed by WATG (Wimberly Allison Tong & Goo)
- ✓ Interiors were designed by Hirsch Bender Associates New wing - KNA Design
- ✓ Landscape was designed by Kishore Pradhan



ROOMS CATEGORY

- Guest rooms 357 (Two Blocks 252 built in 2001 and 105 rooms built in 2007)
- 215 Deluxe rooms
- 20 Conservatory rooms
- 49 Royal Premier rooms
- 44 Royal Club rooms
- 1 Maharaja Suite
- 5 Royal Club suites
- 5 Tower suites
- 8 Turret suites
- 2 Royal suites
- 8 Executive suites



The Leela Palace Bengaluru – Food and Beverage

The Leela Palace Bengaluru is home to four restaurants and bars, offering guests a series of legendary dining experiences

- A signature dining experience at our award winning Le Cirque Signature where the exhaustive Franco-Italian menu and ambience creates a mesmerizing culinary event
- Jamavar-the most iconic Indian restaurant is all about bringing authentic Indian flavor/ recipes to your table.
- Our all day dining restaurant has a plethora of cuisines that will leave you spoilt for choice. Nutritious and filling breakfast or a team lunch/dinner, Citrus has it all.
- Perfecting the art of Asian cuisines, Zen presents an exotic Pan Asian culinary in Bengaluru where patrons get a chance to experience the flavors of Asia through subtle seasonings, aromas and textures.



The Leela Palace Bengaluru – Function and Meeting Space

Sl.no	Venue	Area in Sq ft
1	Grand Ballroom	4400
2	Grand Ballroom Prefunction Area	2429
3	Royal Ballroom	2700
4	Royal Ballroom Prefunction Area	1568
5	Turret Boardroom	768
6	Kamal	784
7	Sitara	756
8	Nidhi	644
9	Yatra	460

Sl.no	Venue	Area in Sq ft
10	Diya	891
11	Diya Terrace	1652
12	Surya	392
13	Surya Terrace	1520
14	Maya	280
15	Royal Club Boardroom	700
16	Nithya	840
17	Roshini	406
18	Dhwani	377



TLPB: Area detail (Hotel area is taken from the multipurpose building)

- Plot area – 28429 Sq.Mtrs
- Built up area – 72554 Sq.Mtrs
- Carpet area 57049 Sq.mtrs
- Building 3 basements, G and 7 floors
- Ground Coverage area: 8269 Sq. Mtrs
- Hard paved area -9944 Sq.Mtrs
- Soft green area 7075 Sq.Mtr
- Terrace area 5275 Sq.Mtr
- Power sanctioned – 2500 KVA, Billed Demand – 2125, MD recorded: 1950 KVA
- Windmills 1.5 MW X 4 = 6 MW captive use (annual generation 85 LKWH)
- Correct name of the Entity / Company – The Leela Palace Bengaluru. Schloss Bangalore Pvt Ltd
- GST Number. 29ABBCS7760A1ZC

Energy Summary- Last 4 years

S. No.	Parameter		2020-21	2019-2020	2018-2019	2017-2018
1	General					
a	Annual turnover of the unit (2019-20) (Rs in Million)	million Rs.	366.35	1905.7	2026.2	1955.0
b	Energy Cost as a % of operating cost	%	45%	3%	3%	3%
c	Electrical Energy Cost (Rs. / kWh)	Rs. / kWh	9.77	6.6	6.9	9.5
2	Energy					
a	Annual Electrical Energy, purchased from Utility	kWh	4400586	7804781	8479508	7180224
b	Annual Electrical Energy, Generated from DG/GG	kWh	35968	68352	45948	37516
c	Total Annual Energy, Utility + Generated	kWh	4436554	7873133	8525456	7217740
3	Energy Cost					
a	Annual Cost of Electrical Energy, purchased from Utility	million Rs.	43.0	51.9	59.1	68.2
b	Annual Cost of Electrical Energy, Generated from DG/GG	million Rs.	1.1	0.32	0.10	0.07
c	Total Annual Cost of Energy Cost, Utility + Generated	million Rs.	44.4	52.2	59.2	68.3
4	Area of the buiding (Excluding parking, lawns, roads etc)					
a	Built up area	sq m	870648	870648	870648	870648
b	Total Carpet Area	sq m	684588	684588	684588	684588
c	Non active carpet area	sq m	186060	186060	186060	186060
d	No. of the floors in the building	Nos	G+7	G+7	G+7	G+7
e	Working Hours / Day	Nos	24	24	24	24
	Working Day/Week		6	6	6	6
5	Office					
a	Total Numbers of Employees		600	600	600	600
b	Average Numbers of persons at any given point of time		650	650	650	650
6	Specific Electrical Energy Consumption		61.1	108.51	117.50	99.48

Annual Energy Summary-2020

S. No.	Parameter		2020-21
1	General		
a	Annual turnover of the unit (2019-20) (Rs in Million)	million Rs.	366
b	Energy Cost as a % of operating cost	%	12%
c	Electrical Energy Cost (Rs. / kWh)	Rs. / kWh	10
2	Energy		
a	Annuual Electrical Energy, purchased from Utility	kWh	4400586
b	Annuual Electrical Energy, Generated from DG/GG	kWh	35968
c	Total Annual Energy, Utility + Generated	kWh	4436554
3	Energy Cost		
a	Annuual Cost of Electrical Energy, purchased from Utility	million Rs.	43.00
b	Annuual Cost ofElectrical Energy, Generated from DG/GG	million Rs.	1.08
c	Total Annual Cost of Energy Cost, Utility + Generated	million Rs.	44.08
4	Area of the buiding (Excluding parking, lawns, roads etc)		
a	Built up area	sq m	72554
b	Total Carpet Area	sq m	570409
c	Non active carpet area	sq m	15505
d	No. of the floors in the building	Nos	3 Basements G and 7 floors.
e	Working Hours / Day	Nos	3 Shifts 24:00 Hrs
	Working Day/Week		7 Days
5	Office		
a	Total Numbers of Employees		635
b	Average Numbers of persons at any given point of time		511
6	Specific Electrical Energy Consumption		61

Annual Energy Summary-2019

S. No.	Parameter		2019-2020
1	General		
a	Annual turnover of the unit (2019-20) (Rs in Million)	million Rs.	1905.7
b	Energy Cost as a % of operating cost	%	3%
c	Electrical Energy Cost (Rs. / kWh)	Rs. / kWh	6.6
2	Energy		
a	Annual Electrical Energy, purchased from Utility	kWh	7804781
b	Annual Electrical Energy, Generated from DG/GG	kWh	68352
c	Total Annual Energy, Utility + Generated	kWh	7873133
3	Energy Cost		
a	Annual Cost of Electrical Energy, purchased from Utility	million Rs.	51.9
b	Annual Cost of Electrical Energy, Generated from DG/GG	million Rs.	0.32
c	Total Annual Cost of Energy Cost, Utility + Generated	million Rs.	52.2
4	Area of the buiding (Excluding parking, lawns, roads etc)		
a	Built up area	sq m	870648
b	Total Carpet Area	sq m	684588
c	Non active carpet area	sq m	186060
d	No. of the floors in the building	Nos	G+7
e	Working Hours / Day	Nos	24
	Working Day/Week		6
5	Office		
a	Total Numbers of Employees		600
b	Average Numbers of persons at any given point of time		650
6	Specific Electrical Energy Consumption		108.51

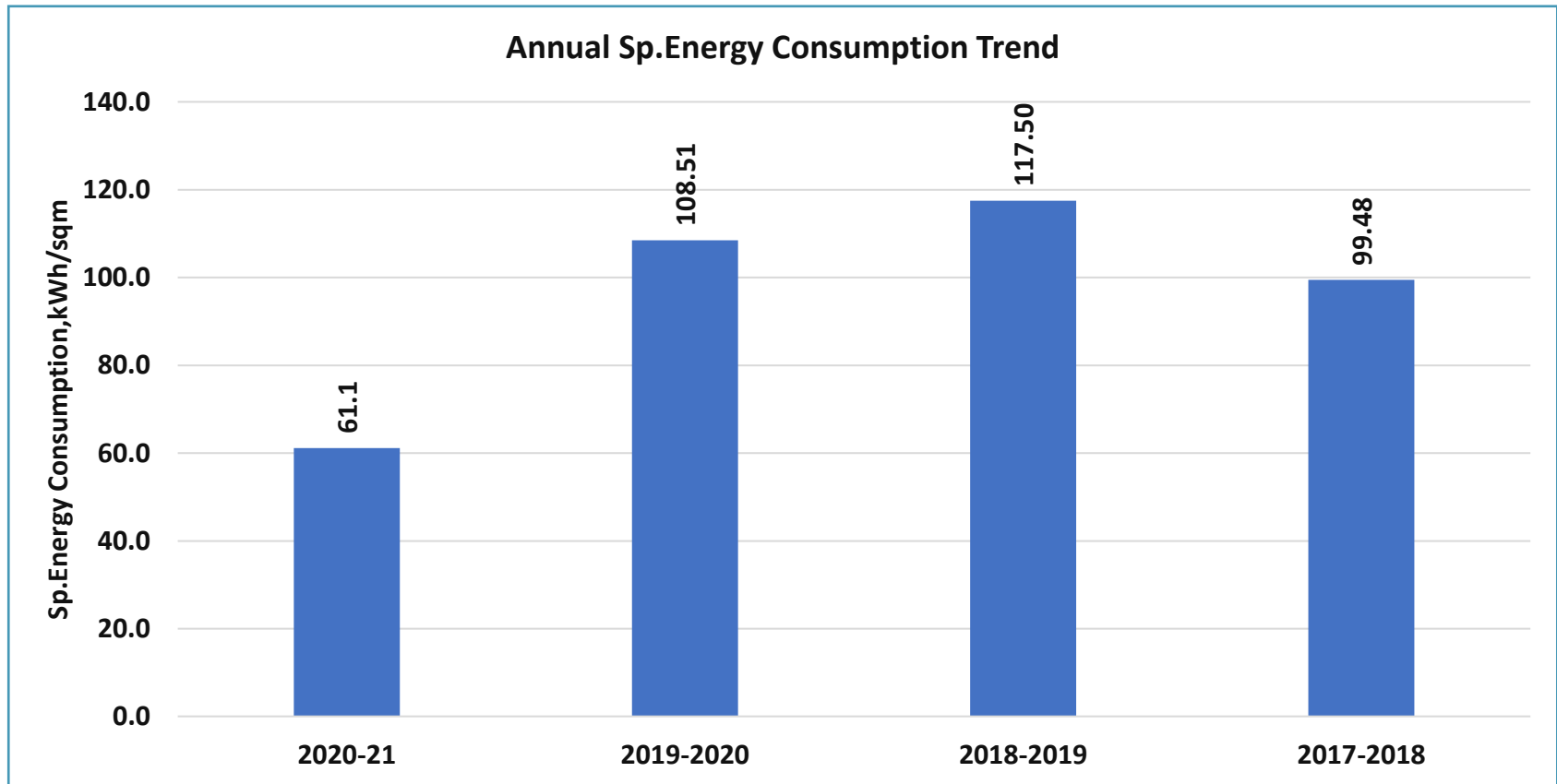
Annual Energy Summary-2018

S. No.	Parameter		2018-2019
1	General		
a	Annual turnover of the unit (2019-20) (Rs in Million)	million Rs.	2026.2
b	Energy Cost as a % of operating cost	%	3%
c	Electrical Energy Cost (Rs. / kWh)	Rs. / kWh	6.9
2	Energy		
a	Annuual Electrical Energy, purchased from Utility	kWh	8479508
b	Annuual Electrical Energy, Generated from DG/GG	kWh	45948
c	Total Annual Energy, Utility + Generated	kWh	8525456
3	Energy Cost		
a	Annuual Cost of Electrical Energy, purchased from Utility	million Rs.	59.1
b	Annuual Cost ofElectrical Energy, Generated from DG/GG	million Rs.	0.10
c	Total Annual Cost of Energy Cost, Utility + Generated	million Rs.	59.2
4	Area of the buiding (Excluding parking, lawns, roads etc)		
a	Built up area	sq m	870648
b	Total Carpet Area	sq m	684588
c	Non active carpet area	sq m	186060
d	No. of the floors in the building	Nos	G+7
e	Working Hours / Day	Nos	24
	Working Day/Week		6
5	Office		
a	Total Numbers of Employees		600
b	Average Numbers of persons at any given point of time		650
6	Specific Electrical Energy Consumption		117.50

Annual Energy Summary-2017

S. No.	Parameter		2017-2018
1	General		
a	Annual turnover of the unit (2019-20) (Rs in Million)	million Rs.	1955.0
b	Energy Cost as a % of operating cost	%	3%
c	Electrical Energy Cost (Rs. / kWh)	Rs. / kWh	9.5
2	Energy		
a	Annual Electrical Energy, purchased from Utility	kWh	7180224
b	Annual Electrical Energy, Generated from DG/GG	kWh	37516
c	Total Annual Energy, Utility + Generated	kWh	7217740
3	Energy Cost		
a	Annual Cost of Electrical Energy, purchased from Utility	million Rs.	68.2
b	Annual Cost of Electrical Energy, Generated from DG/GG	million Rs.	0.07
c	Total Annual Cost of Energy Cost, Utility + Generated	million Rs.	68.3
4	Area of the building (Excluding parking, lawns, roads etc)		
a	Built up area	sq m	870648
b	Total Carpet Area	sq m	684588
c	Non active carpet area	sq m	186060
d	No. of the floors in the building	Nos	G+7
e	Working Hours / Day	Nos	24
	Working Day/Week		6
5	Office		
a	Total Numbers of Employees		600
b	Average Numbers of persons at any given point of time		650
6	Specific Electrical Energy Consumption		99.48

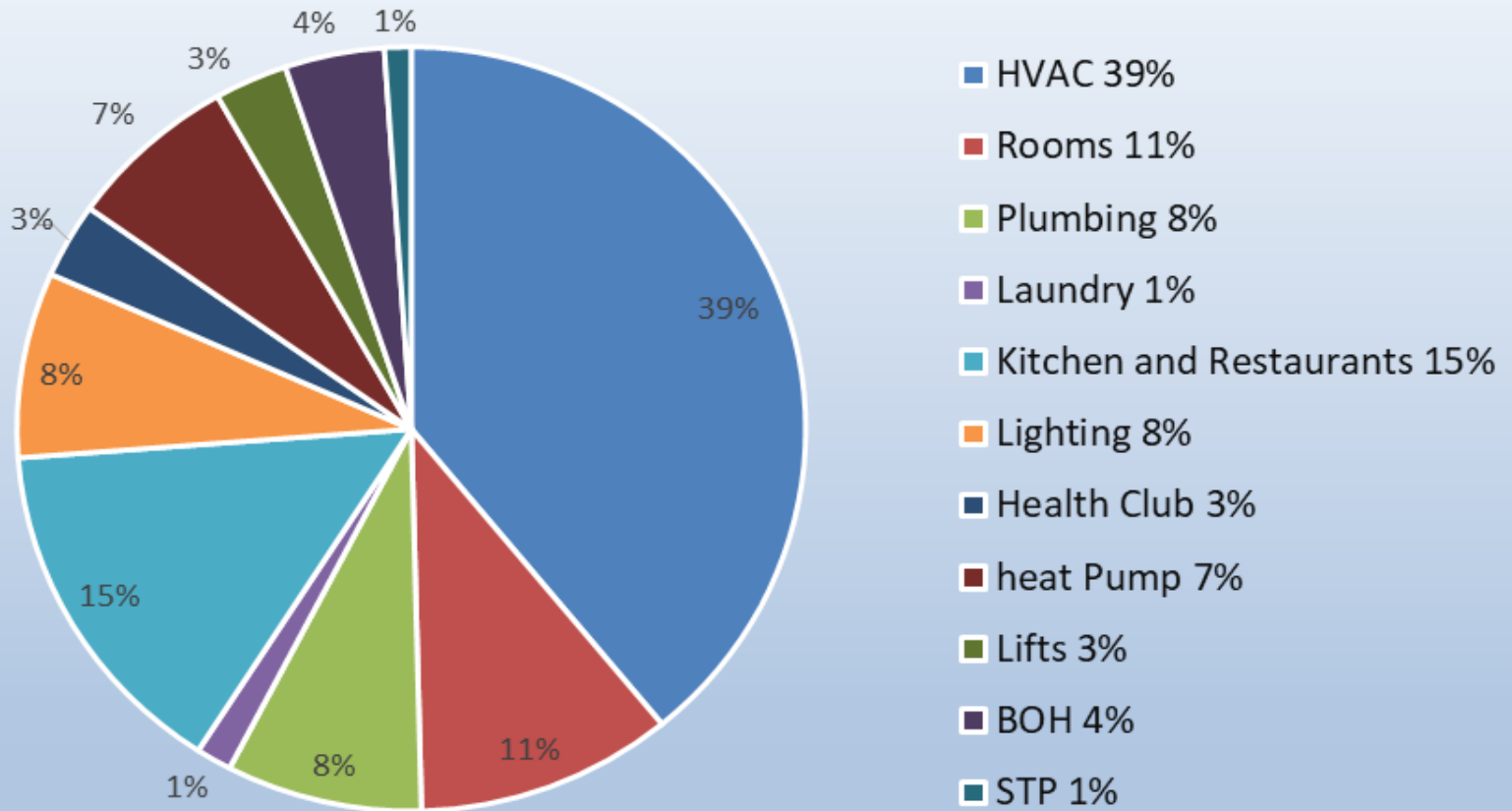
Annual Sp. Energy Consumption Trend



- Annual trend of reducing specific energy consumption has been observed.
- 2020-21 Sp. energy consumption has drifted to very low condition because of pandemic impact & corresponding low occupancy in the hotel.

Utility wise Energy Mapping

Annual Electricity consumption 2020



Hotel power utilized from BESCOM

Hotel wind energy generated units

5568900 KWH

8576808 KWH



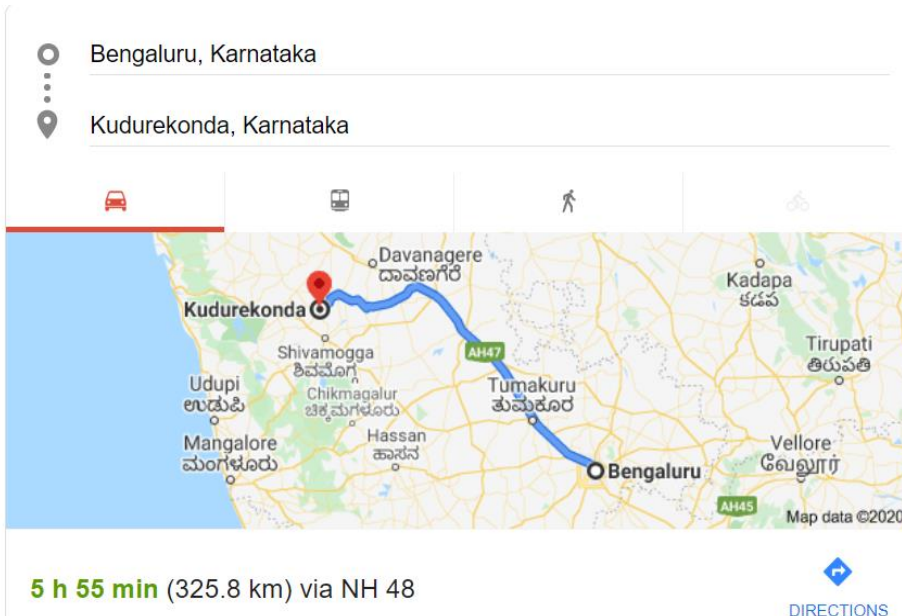
Energy produced than utilized

Windmills

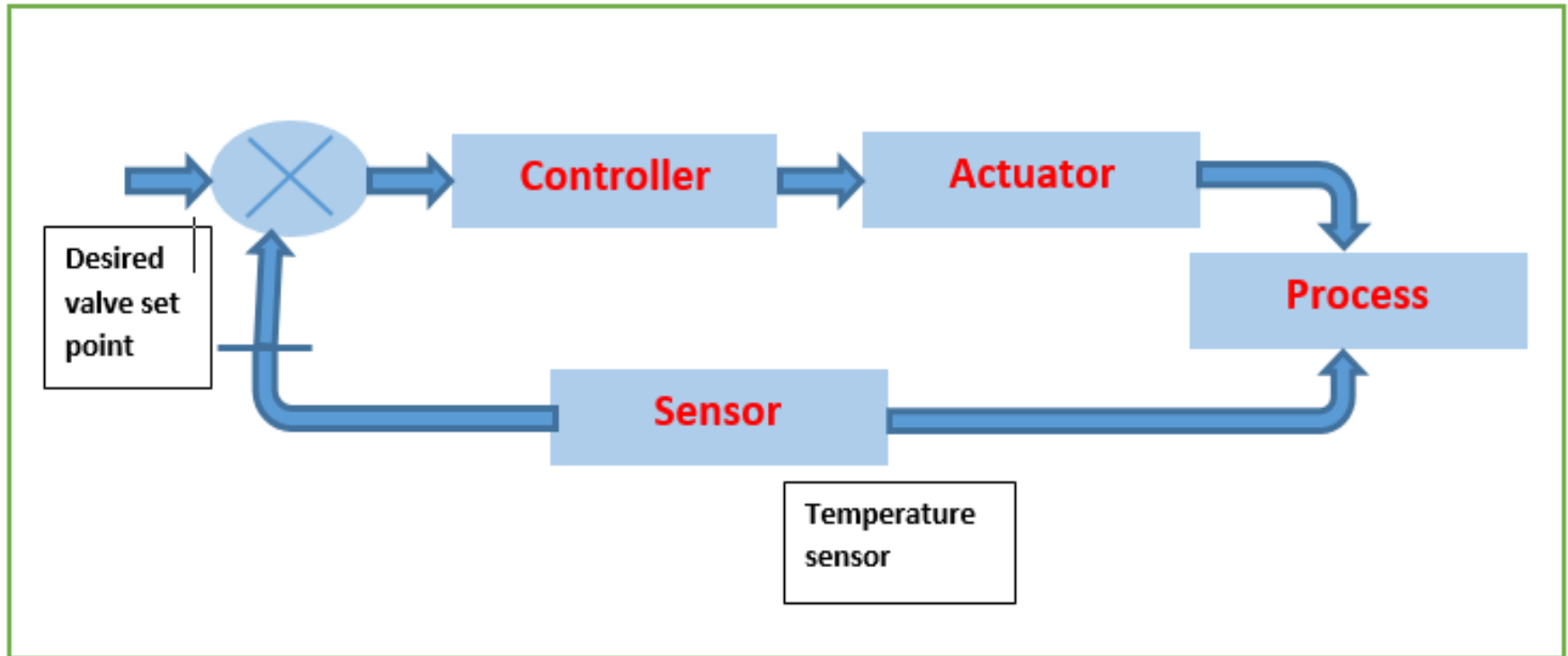
- Suzlon windmills located in Kudrekonda, Davanagerre district. Karnataka, 350 KM from Bangalore
- Total Capacity is 5 MW.
- K 534 – 1.25 MW
- K535 – 1.25 MW
- K536 – 1.25 MW
- K537 – 1.25 MW
- The project cost today 30 Cr. (Approximate)

Financial year	Energy generated in KWH
----------------	-------------------------

2016-2017	85,58,501
2017-2018	83,14,643
2018-2019	84,78,599
2019-2020	86,92,413



PID Logic controller for AHU Actuators



Proportional Integral Derivative Logic controller is implemented in the Air Handling Units . It Plays a great role in the energy efficient based chiller and Heat Ventilation Air Conditioning system operation.

Chiller Replacement



Units with old chiller

3286172

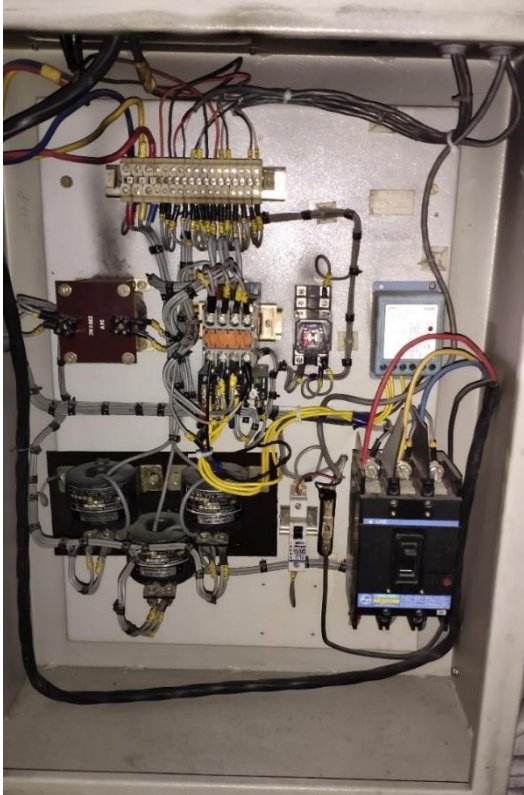
**Unit consumption with
energy efficient chiller**

3046592

Saving units /year

239580

VFD Installation



Actual consumption without vfd

1169569.5



Consumption after VFD installation

1169569.5

Savings in KWH

233914

➤ **Background**

- The hotel has got HSD fired boiler of capacity 1.5TPH.
- HSD fired boilers are being used mainly to cater for the steam requirement of Laundry section.
- The operating cost of HSD fired boiler has become very high because of the increasing price of HSD.

➤ **Solution**

- The burners of HSD fired boiler is being converted to LPG.
- The operating cost of steam generation got reduced.
- The efficiency of the boiler has also increased because of this conversion since LPG is a much cleaner fuel as compared to HSD.

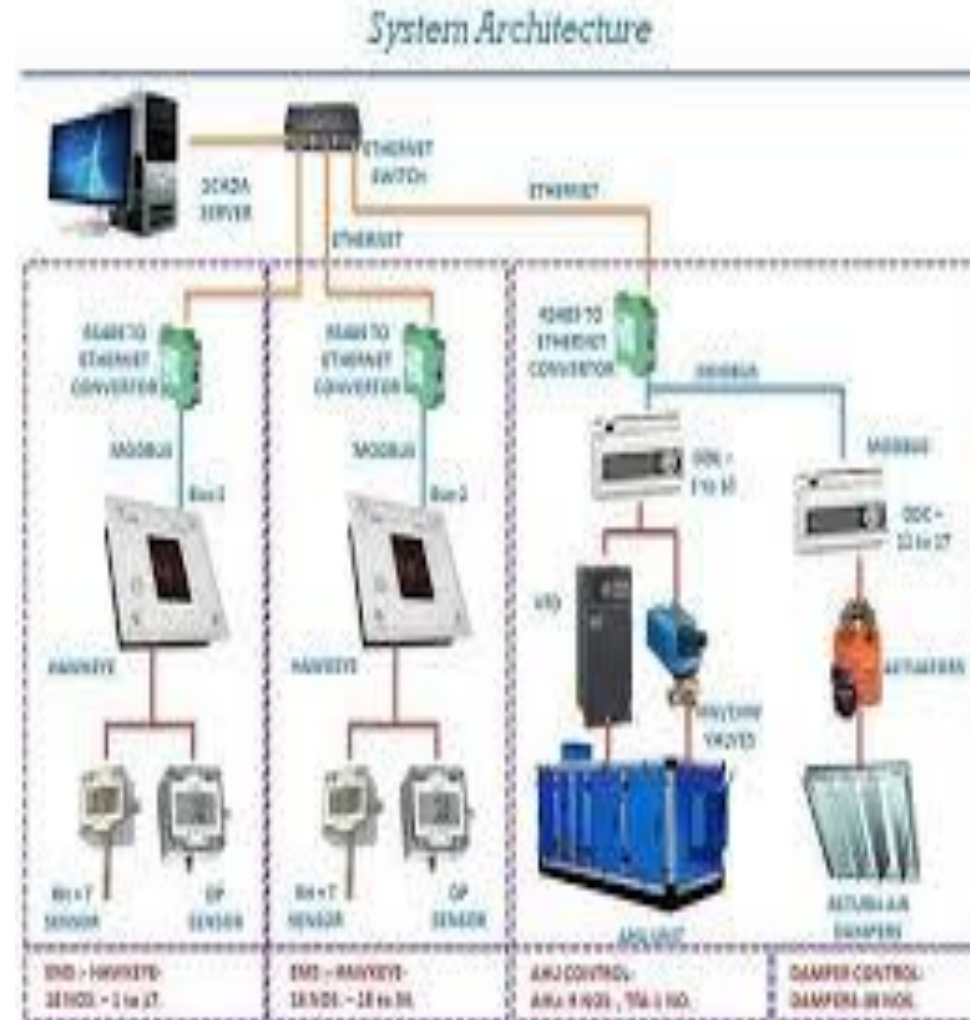
➤ **Cost Benefit Analysis**

- Investment: Rs.15 Lacs
- Savings : Rs.23.31 Lacs
- Payback : Less than a year.



Building Management System & Energy Monitoring System

- Hotel is installed with Building Management system to control central Heating Ventilation Air-conditioning to provide comfortable environment with minimal human interventions.
- Hotel is also having energy monitoring system to monitor & control energy parameters on daily basis.



Total water Usage in KL

68275

Total water treated in KL

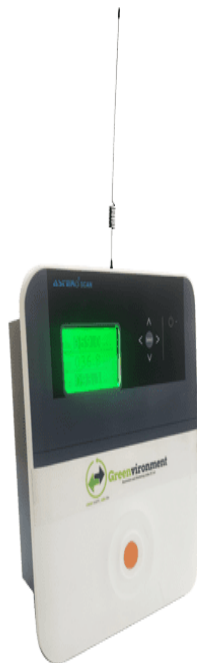
54620

Water recycled

80%

RTM Hardware

RTM Software



Parameters

- ▶ pH
- ▶ Total Dissolved Solids - TDS
- ▶ Chlorine
- ▶ Biochemical Oxygen Demand - BOD
- ▶ Chemical Oxygen Demand - COD
- ▶ Total Suspended Solids - TSS
- ▶ Turbidity
- ▶ Oxidation & Reduction Potential - ORP
- ▶ Flow meters - Electromagnetic
- ▶ Pressure
- ▶ Temperature



- 500 KLD Capacity Plant
- Extended Aeration process
- Real time monitoring and alert system helps to maintain the water parameters in limit
- The system is connected with the KSPCB

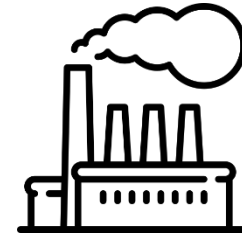
Water Bottling Plant

A new sustainable future for “world’s Top Hotel Brands – leading way for other hotels to follow.

Leading to
reduce



**Plastic
waste**



CO2 emission



Barrels of oil

Automatic tube cleaning system (Upcoming)

- Chemical free condenser tube cleaning process and hence environmentally friendly.
- No shut down/ downtime required.
- Saves Energy Consumption/ Input Power up to 30%.
- Increase in Power output up to 7%.



The Leela Palace Bengaluru – Awards and Accolades



The Leela Palace Bengaluru has been recognized as **Energy Efficient Unit** in the **building's category** by **CII 21st National Awards for Energy Excellence held from 26th to 28th August 2020**

2020: THE LEELA PALACES, HOTELS AND RESORTS VOTED AS THE WORLD'S BEST HOTEL BRAND BY TRAVEL + LEISURE USA, READERS' AWARD SURVEY 2020

2019

Travel Leisure USA – Readers Choice Worlds Best Awards

Ranked #10 amongst the "Top 10 city hotels in Asia"

WOW Award Asia 2019

"Best venue for business events in Metro India"

2018

Travel Leisure USA Worlds Best Awards

Voted #7 in the 'Top 20 Hotel Brands in the World'

Preferred Hotel & Resorts

Hotel of the year India, Middle East & Africa

Zee Business Travel Awards

"Best Luxury Hotel" in India

2017

Travel + Leisure USA Worlds Best Awards

Top 15 Hotel Brands in the World

TripAdvisor2017 Travelers' Choice™ awards

Ranked #23 among "Top 25 Luxury Hotels of India"

CNT India's Top 100 Business Hotels

2016

National Energy Conservation Award

The Leela Palace Bengaluru, Hotel sector (5 star and above) category



Confederation of Indian Industry
125 Years - Since 1895

21st National Award for Excellence in Energy Management 2020

This is to certify that

The Leela Palace, Bengaluru

has been recognized as

"Energy Efficient Unit"

This acknowledgement is based on the evaluation by panel of judges at the "National Award for Excellence in Energy Management" held during 25 - 28 August 2020.



K S Venkatagiri
Executive Director
CII - Godrej GBC



Ravichandran Purushothaman
Chairman, Energy Efficiency Council
CII - Godrej GBC



Thank You